



ÚSTAV INFORMATIKY
Akademie věd České republiky

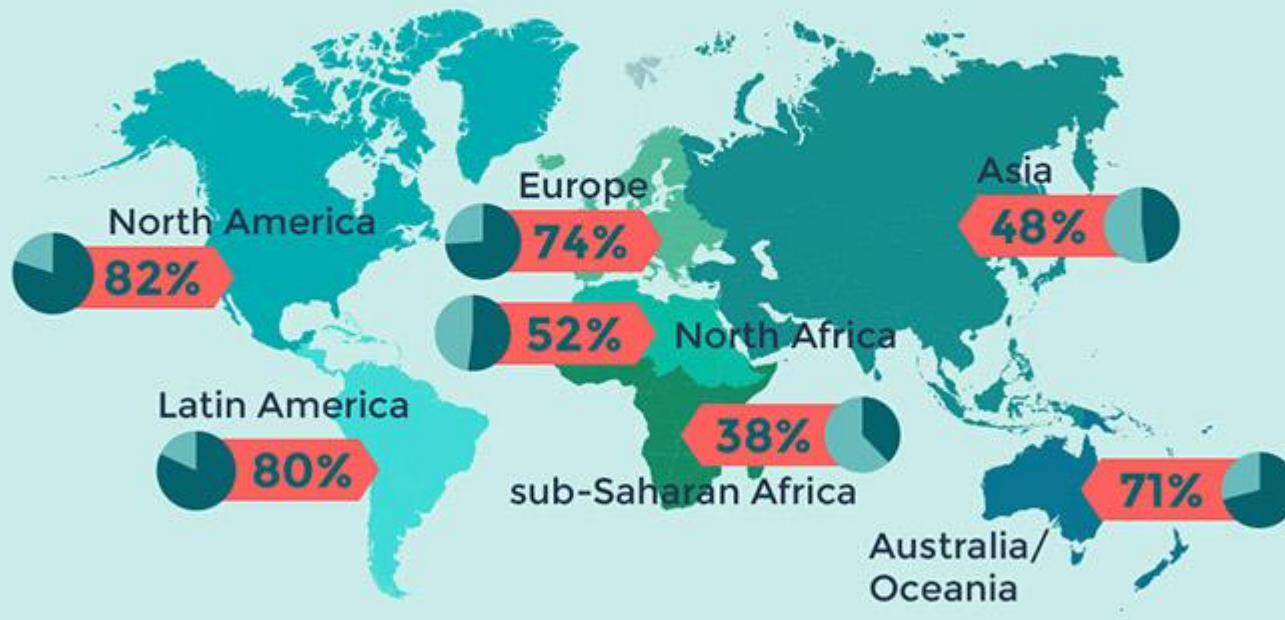
ČLOVĚK A POČASÍ VE MĚSTĚ

Jan Geletič

Ústav Informatiky Akademie věd ČR

Motivace

Share of Urban Population on all Continents



Source: United Nations Department of Economic and Social Affairs (UNDESA) 2016, online database

Měřítko



Globální



Regionální



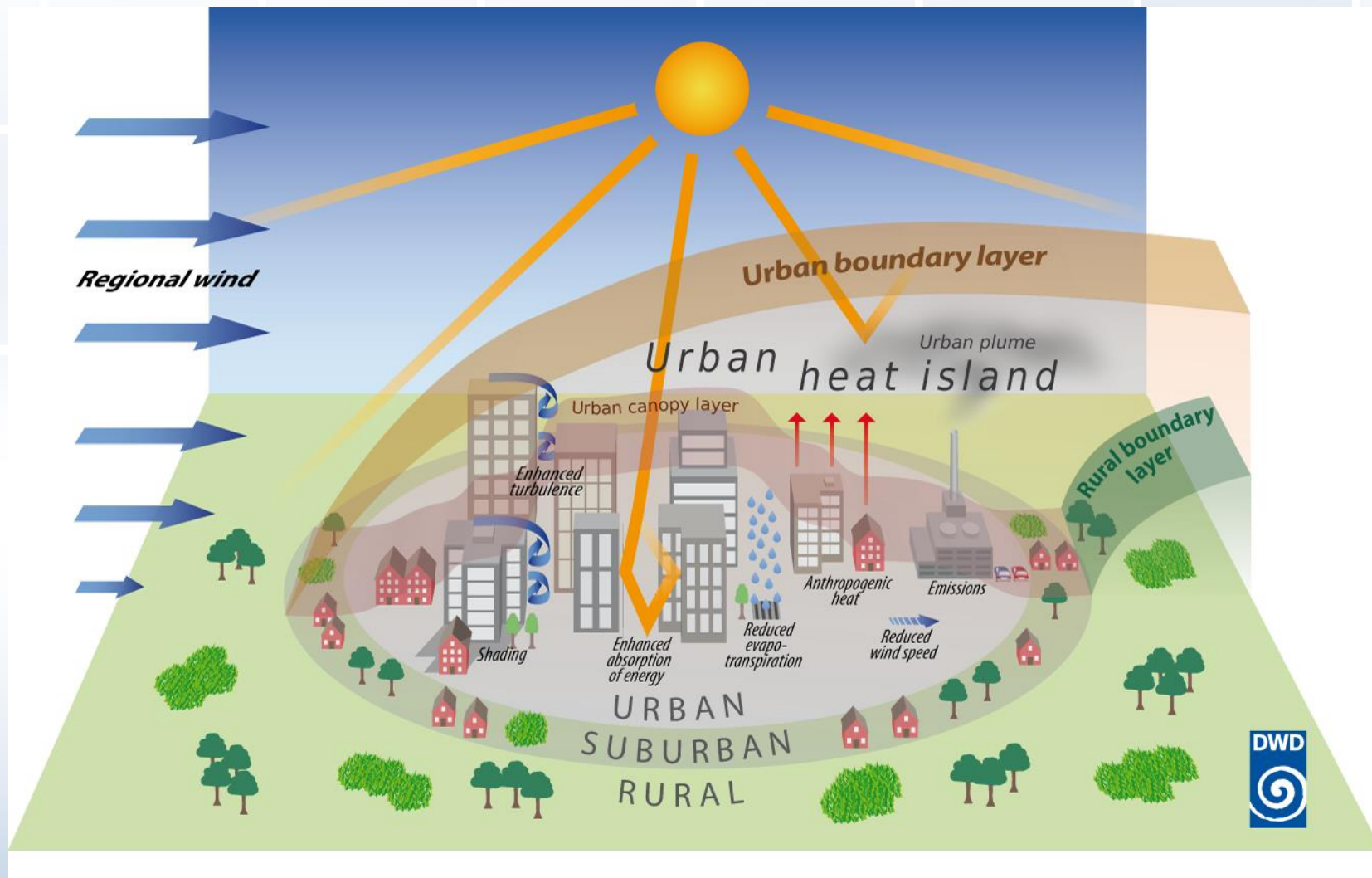
**Místní
(lokální)**



Mikro

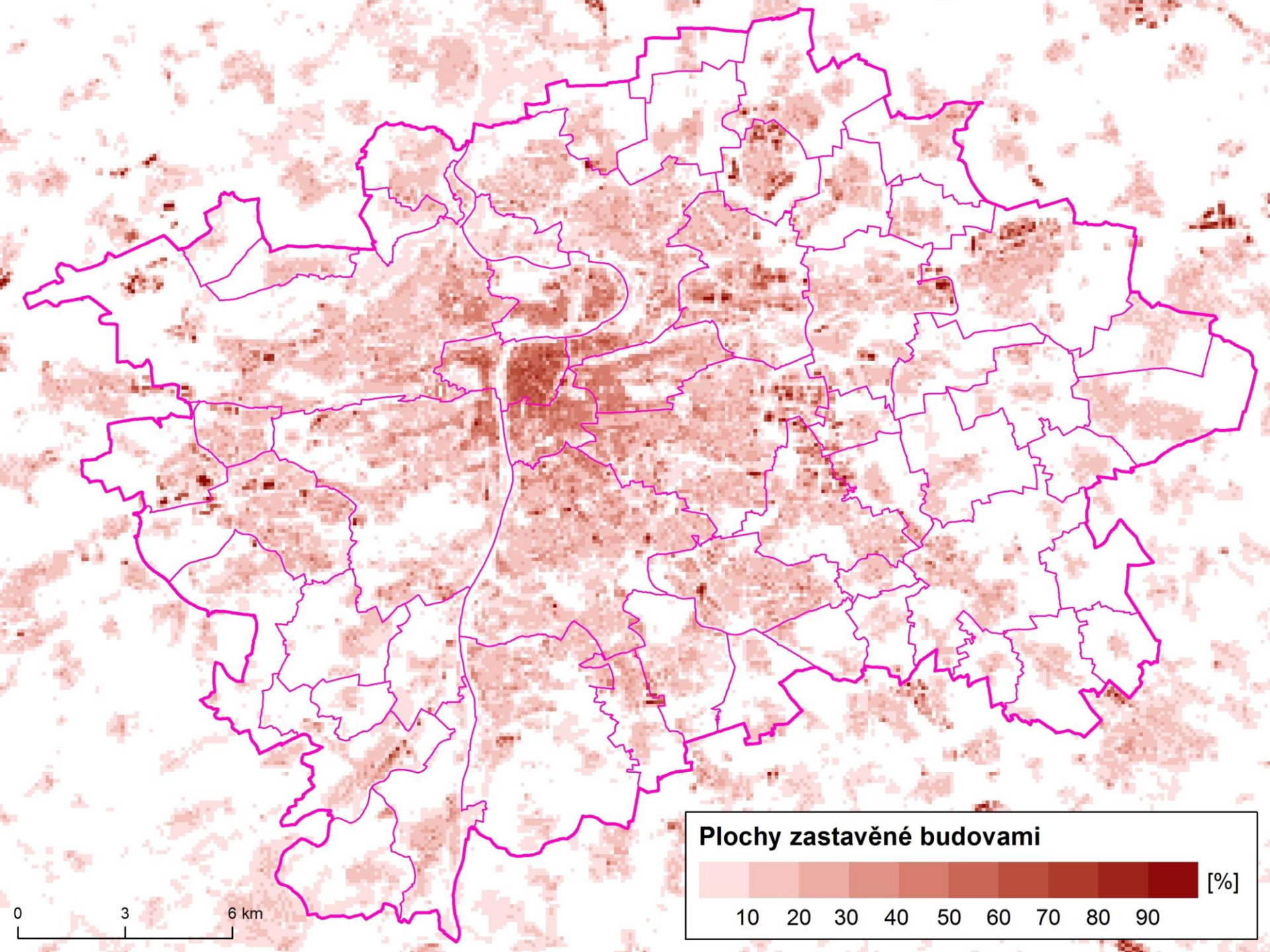


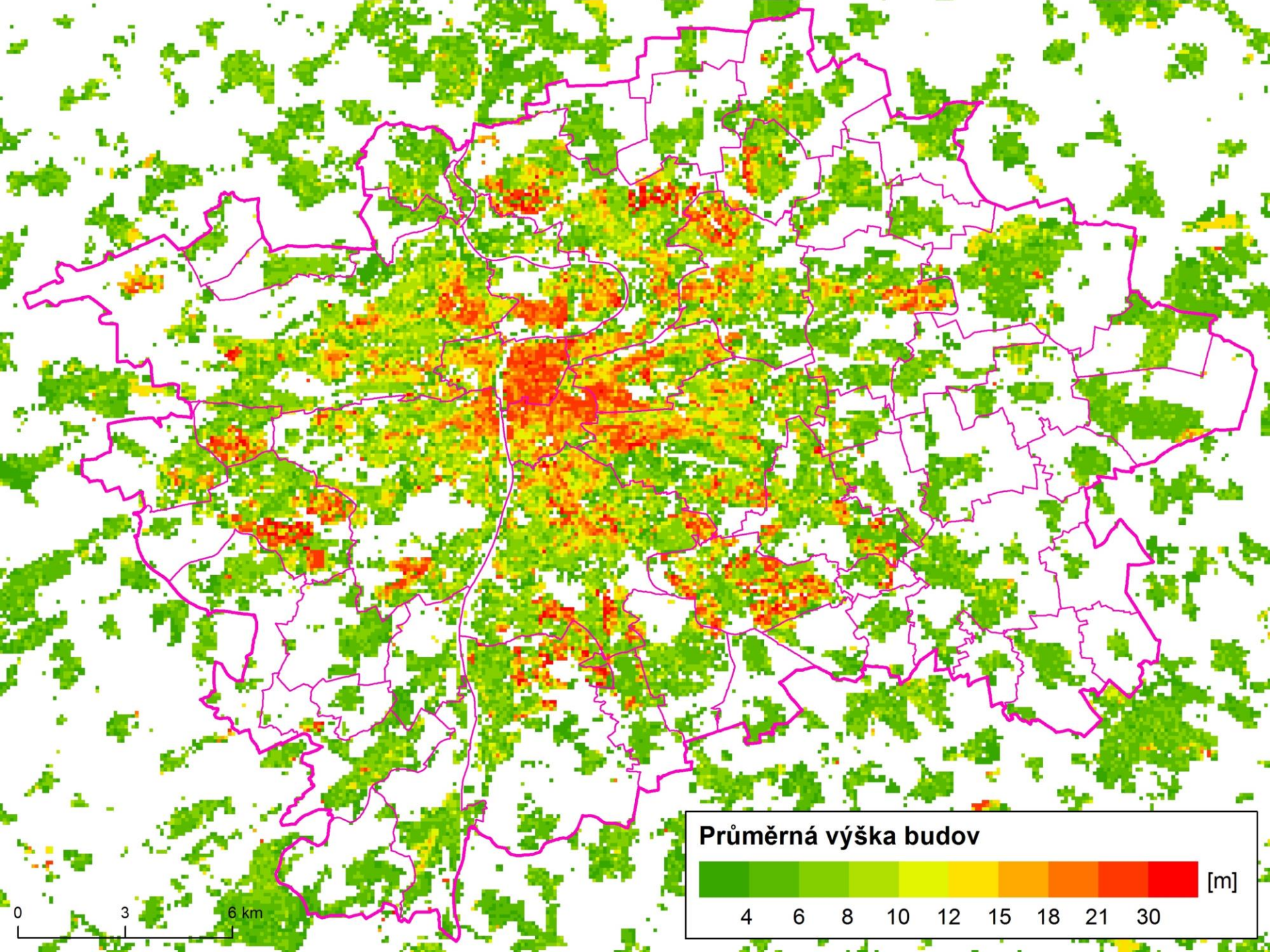
Tepelný ostrov města (UHI)

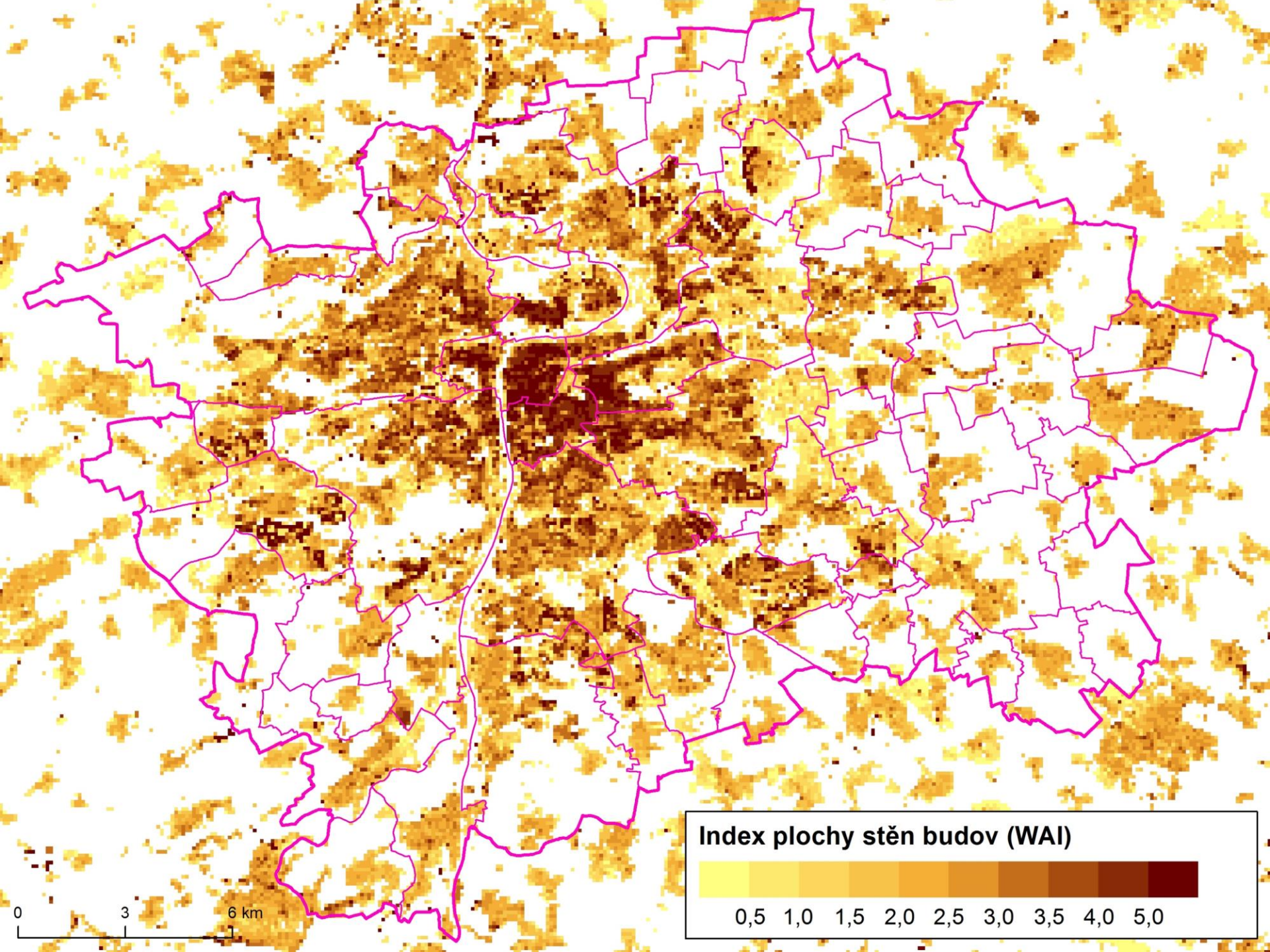


Specifické vlastnosti města

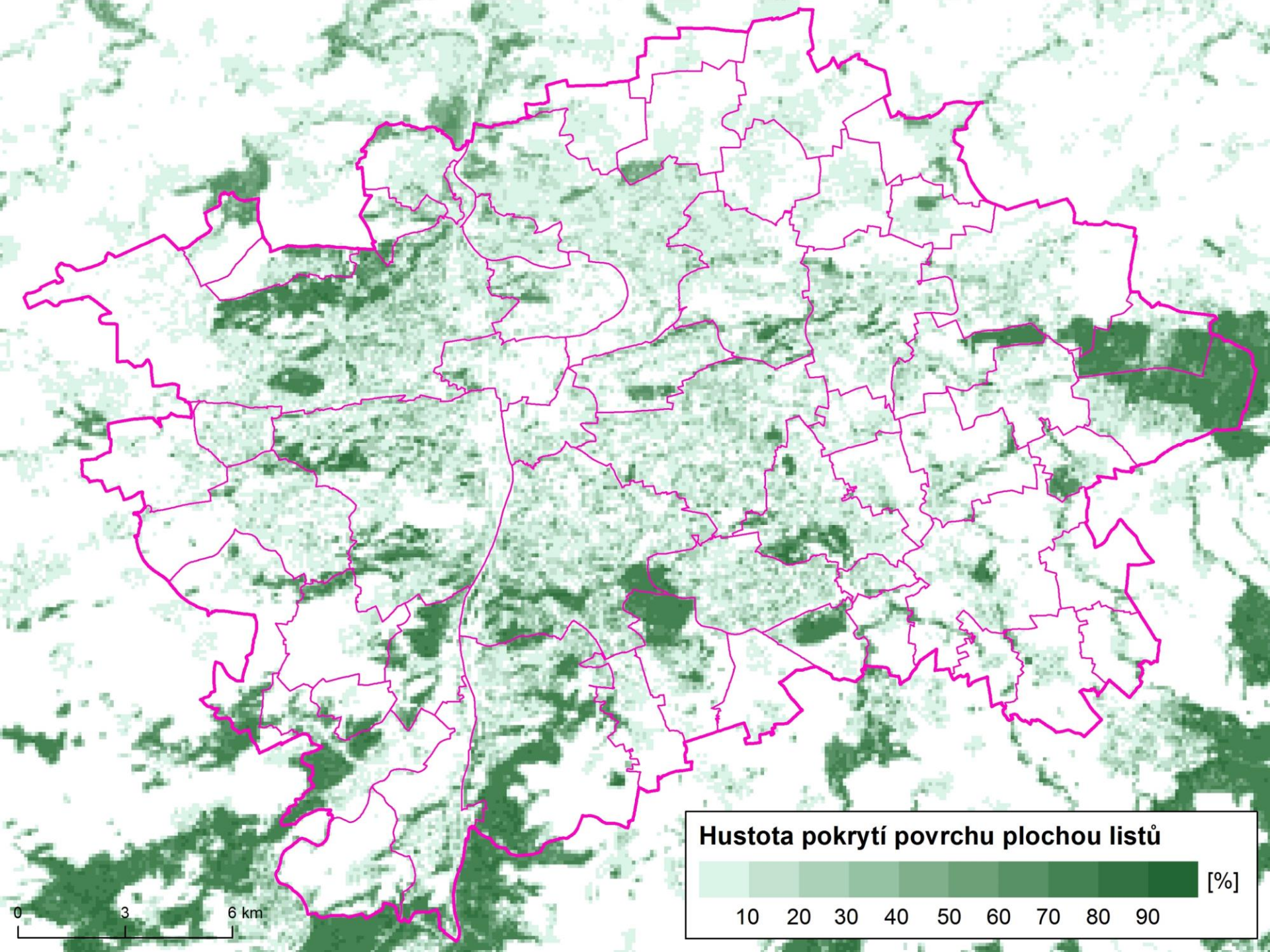
- Nadmořská výška
- Pozice města
- Výška budov
- Výška vegetace
- Struktura zástavby
- Drsnost povrchu
- Plocha stěn budov
- Propustné povrchy
- Nepropustné povrchy
- Vodní plochy
- Hloubka vody
- Intenzity dopravy
- Antropogenní teplo
- Plocha listů
- Typ povrchu
- Vlastnosti povrchu
- Emise
-

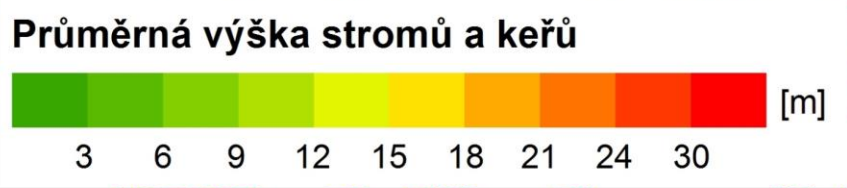
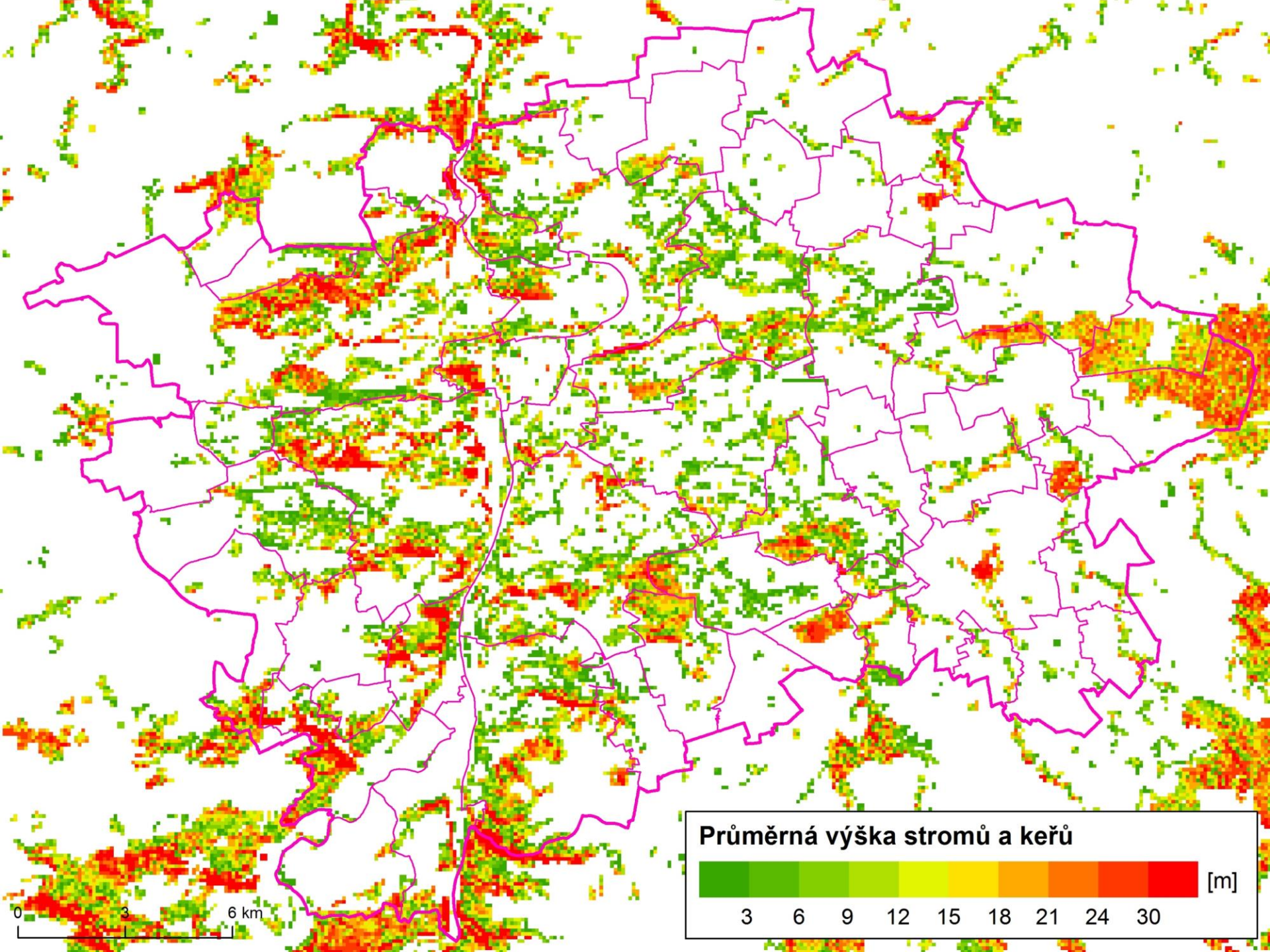




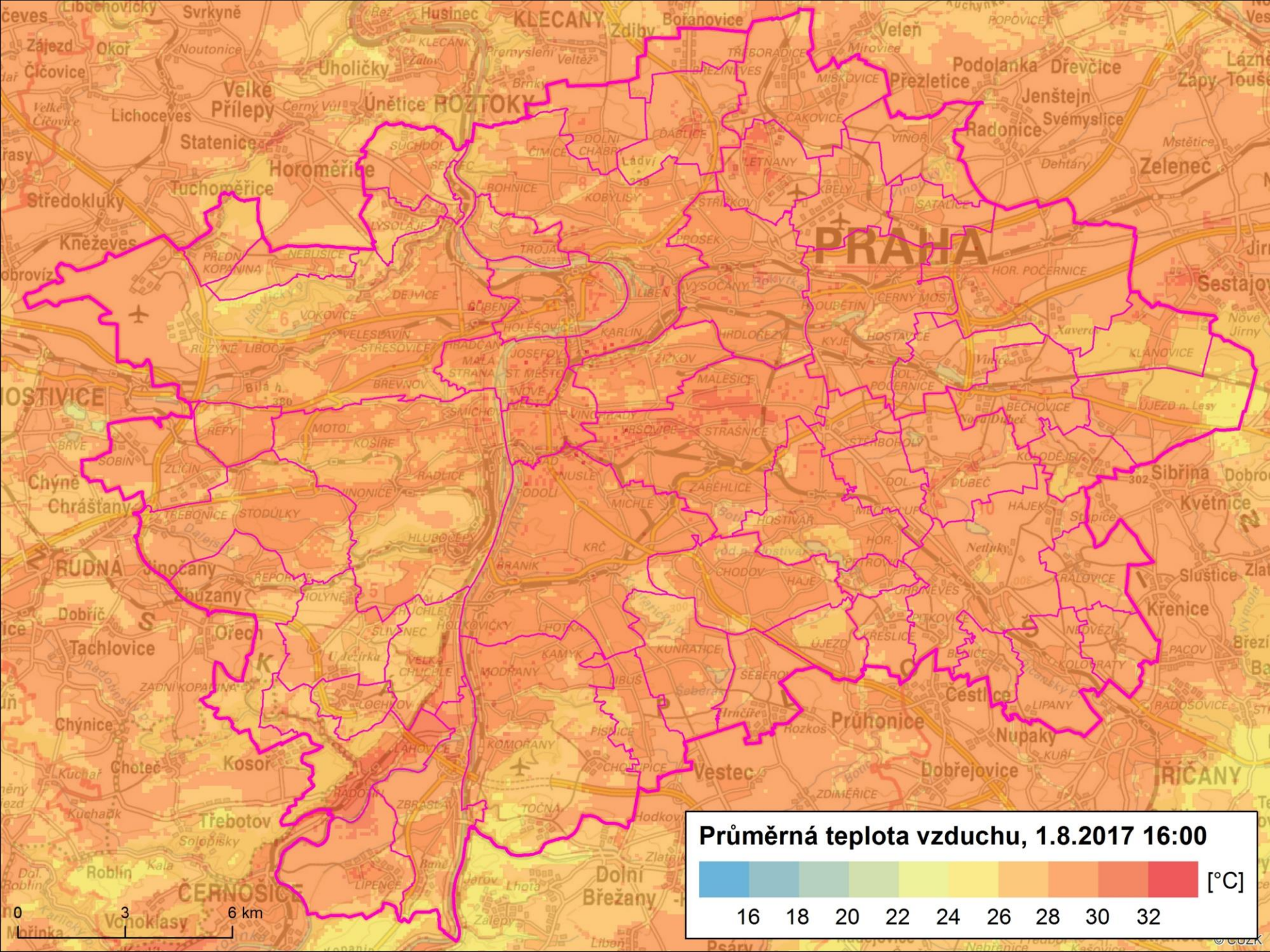


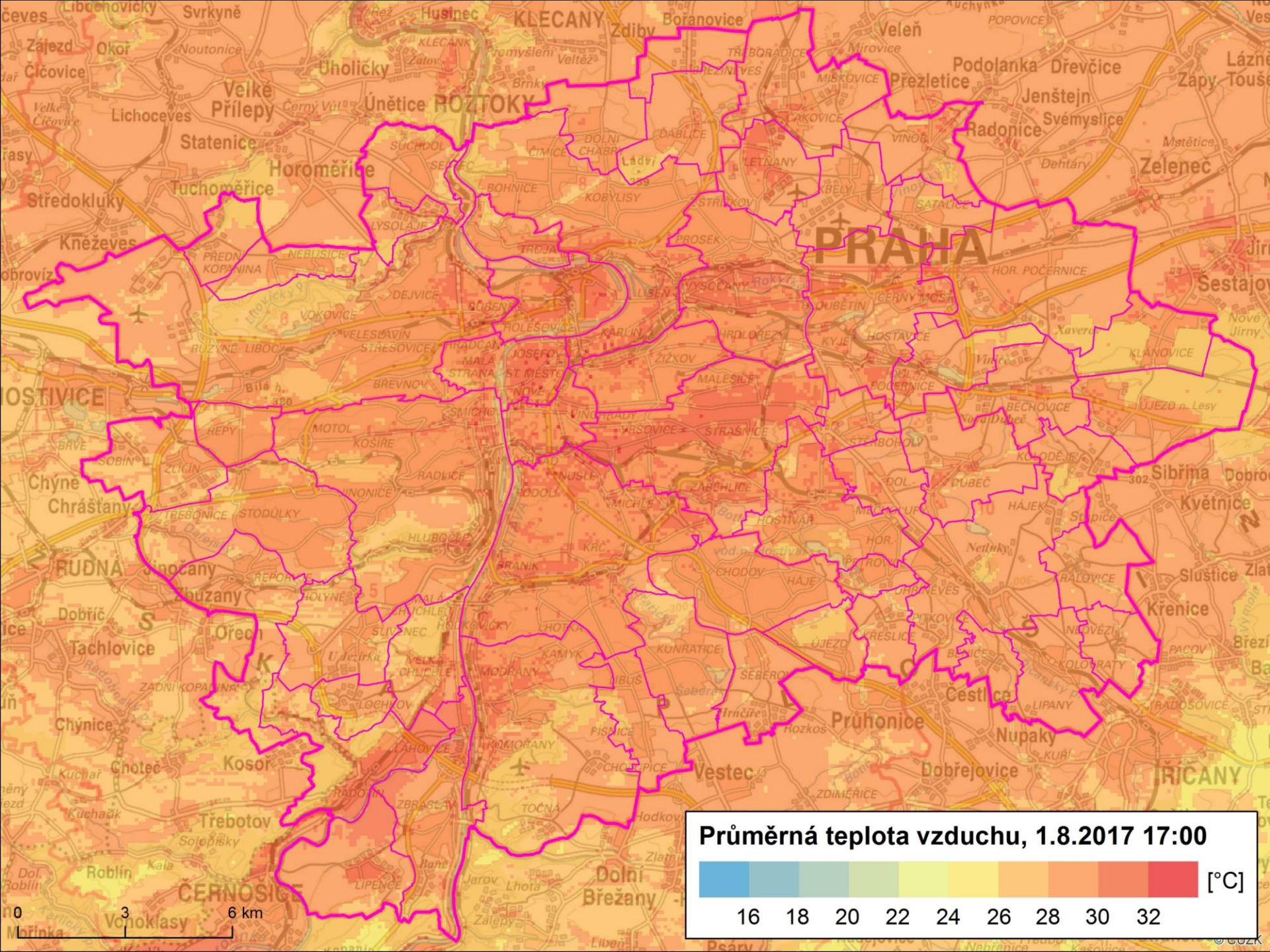


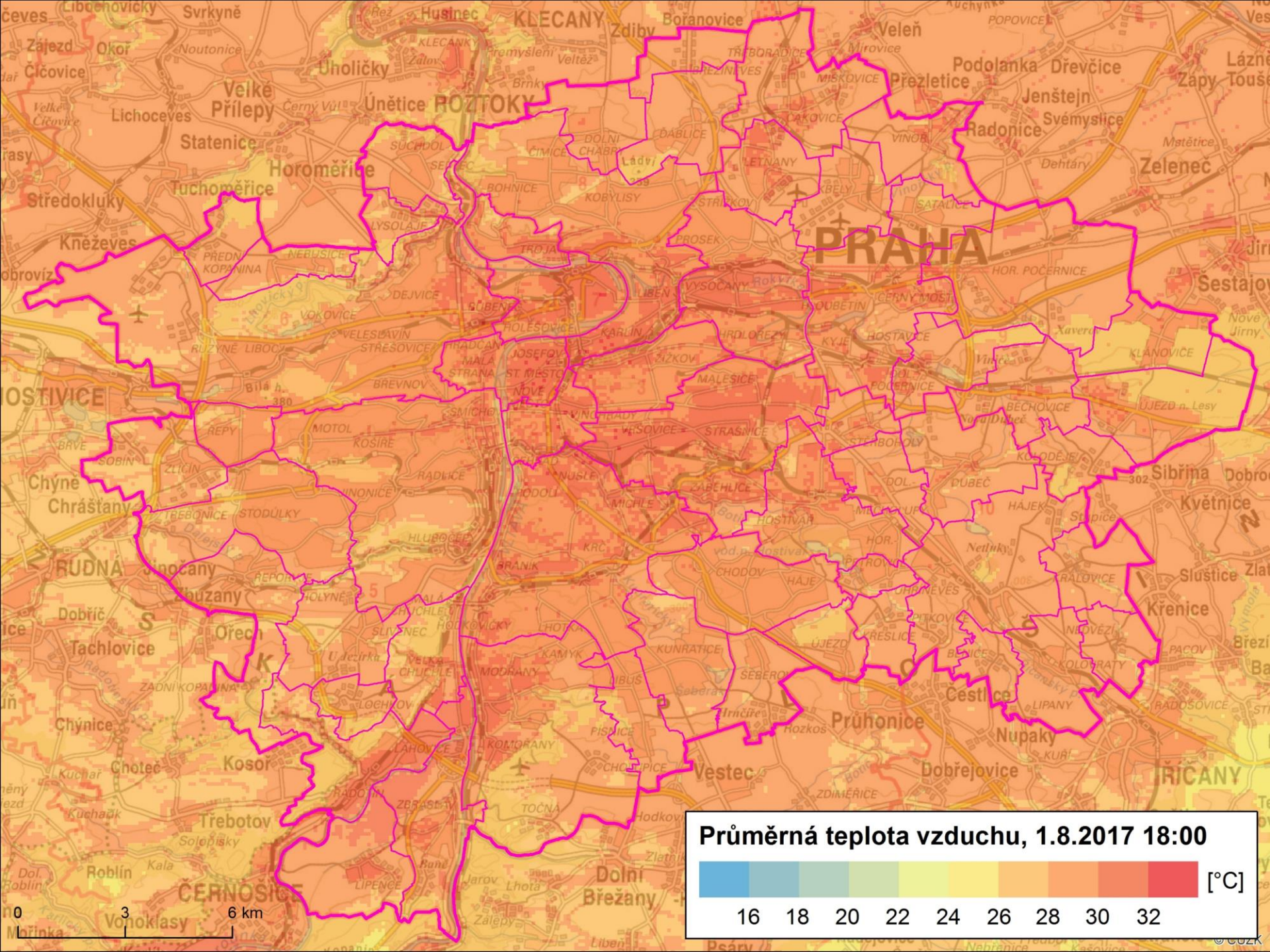




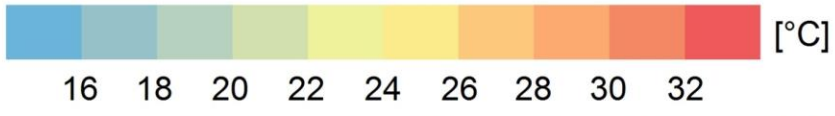
Jak využít znalosti o vlastnostech
města při studiu počasí ve městě?
(příklad 1.8.2017)



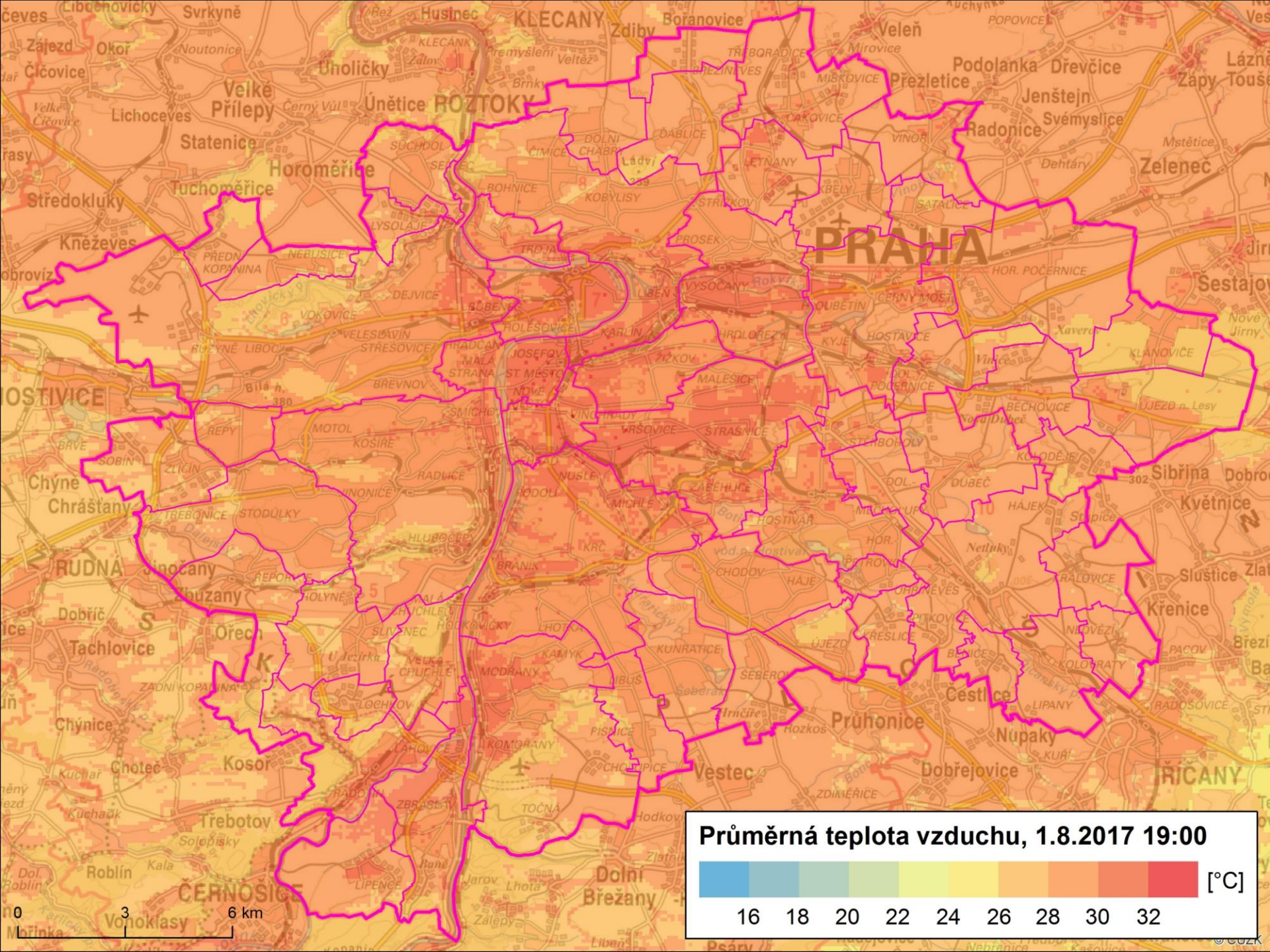




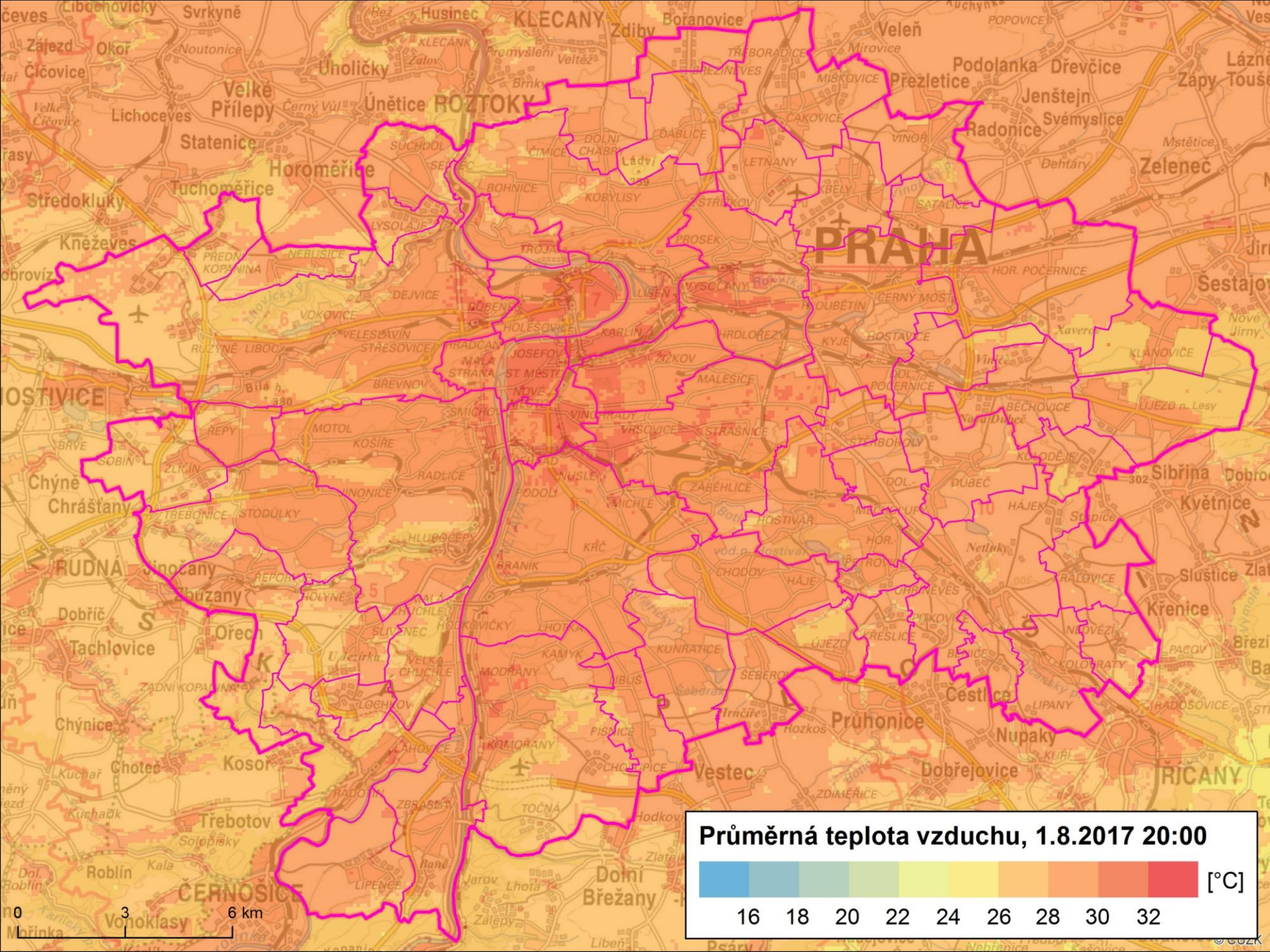
Průměrná teplota vzduchu, 1.8.2017 18:00

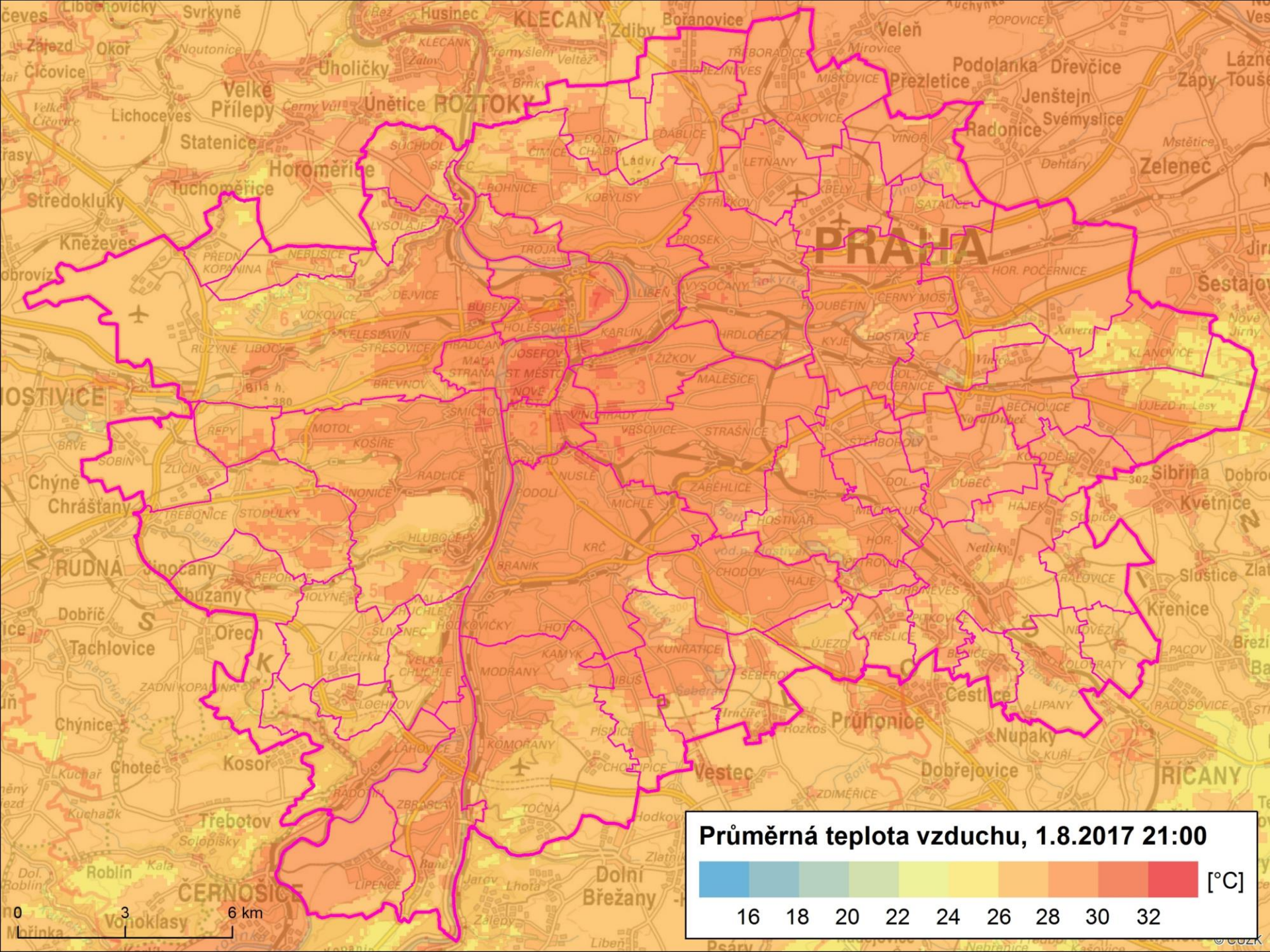


0 3 6 km



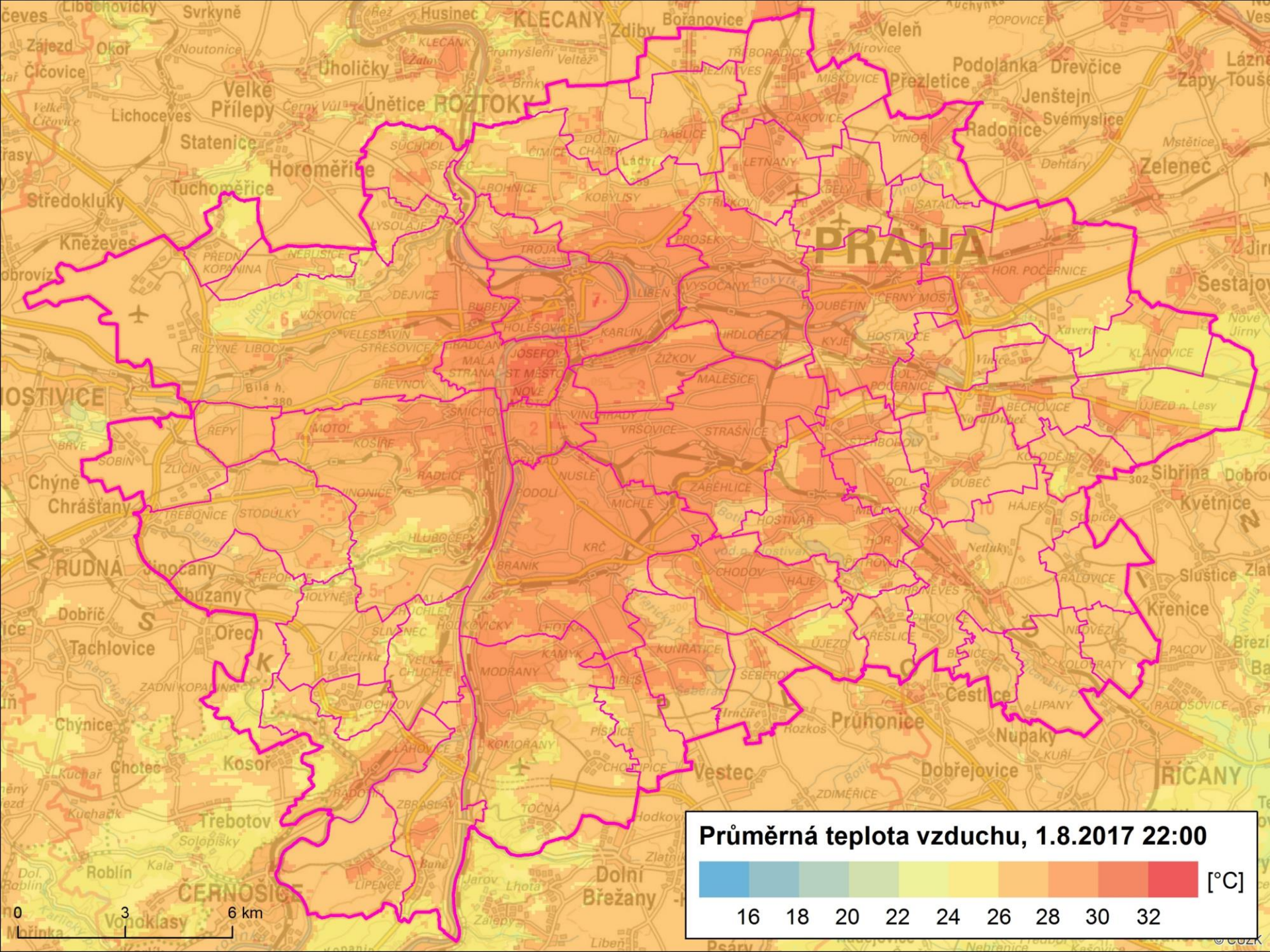
Průměrná teplota vzduchu, 1.8.2017 19:00
[°C]
16 18 20 22 24 26 28 30 32

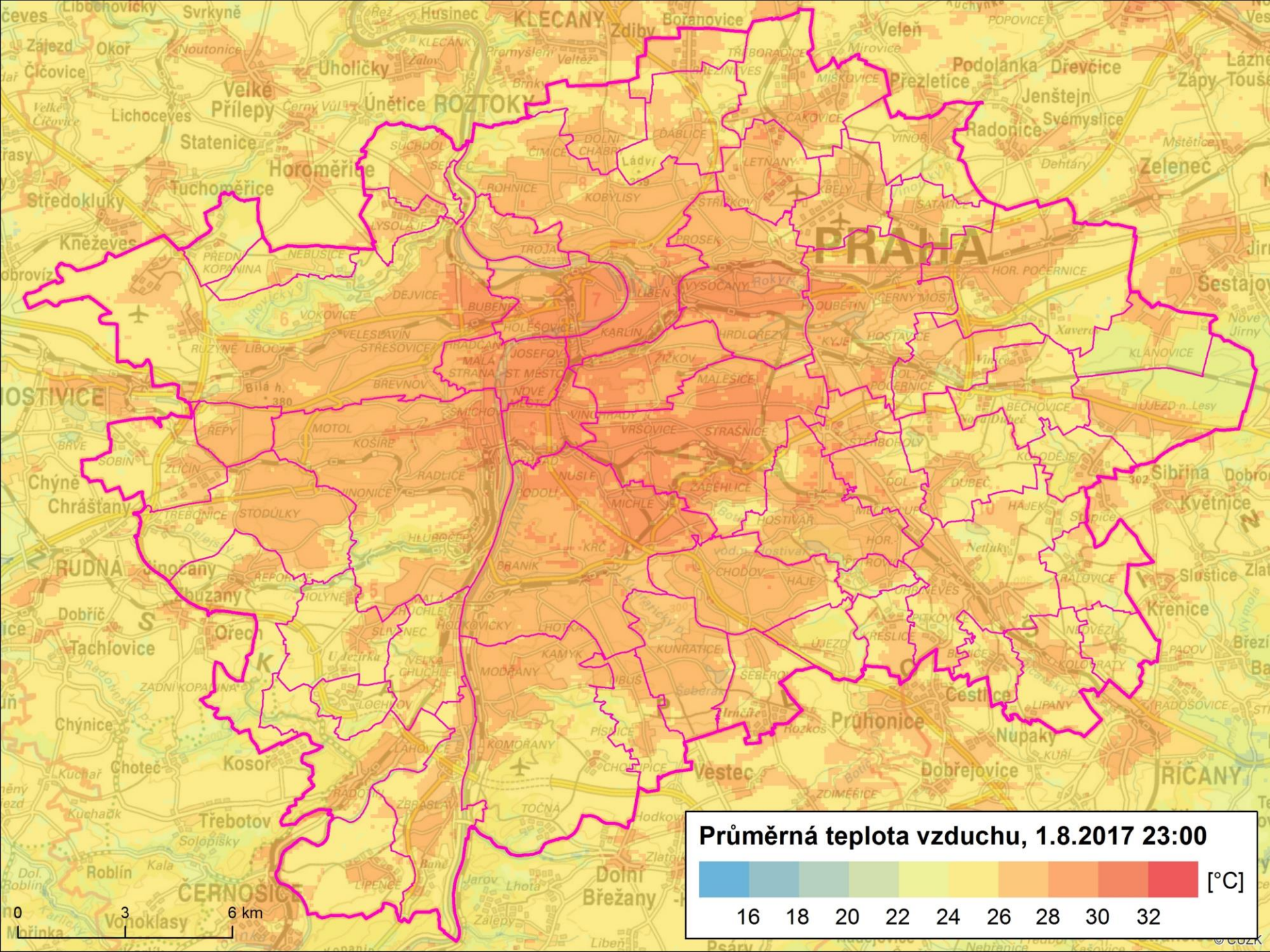


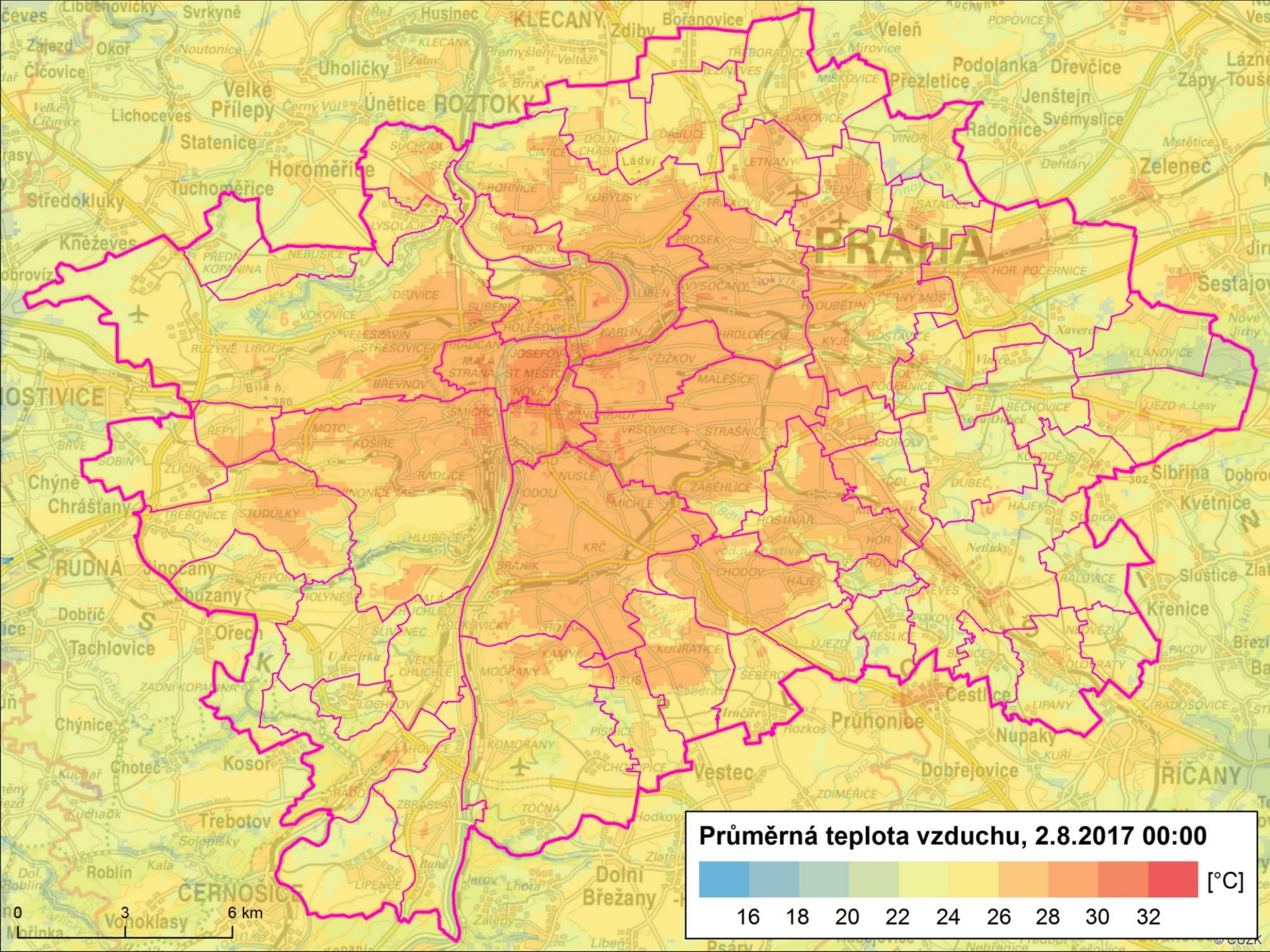


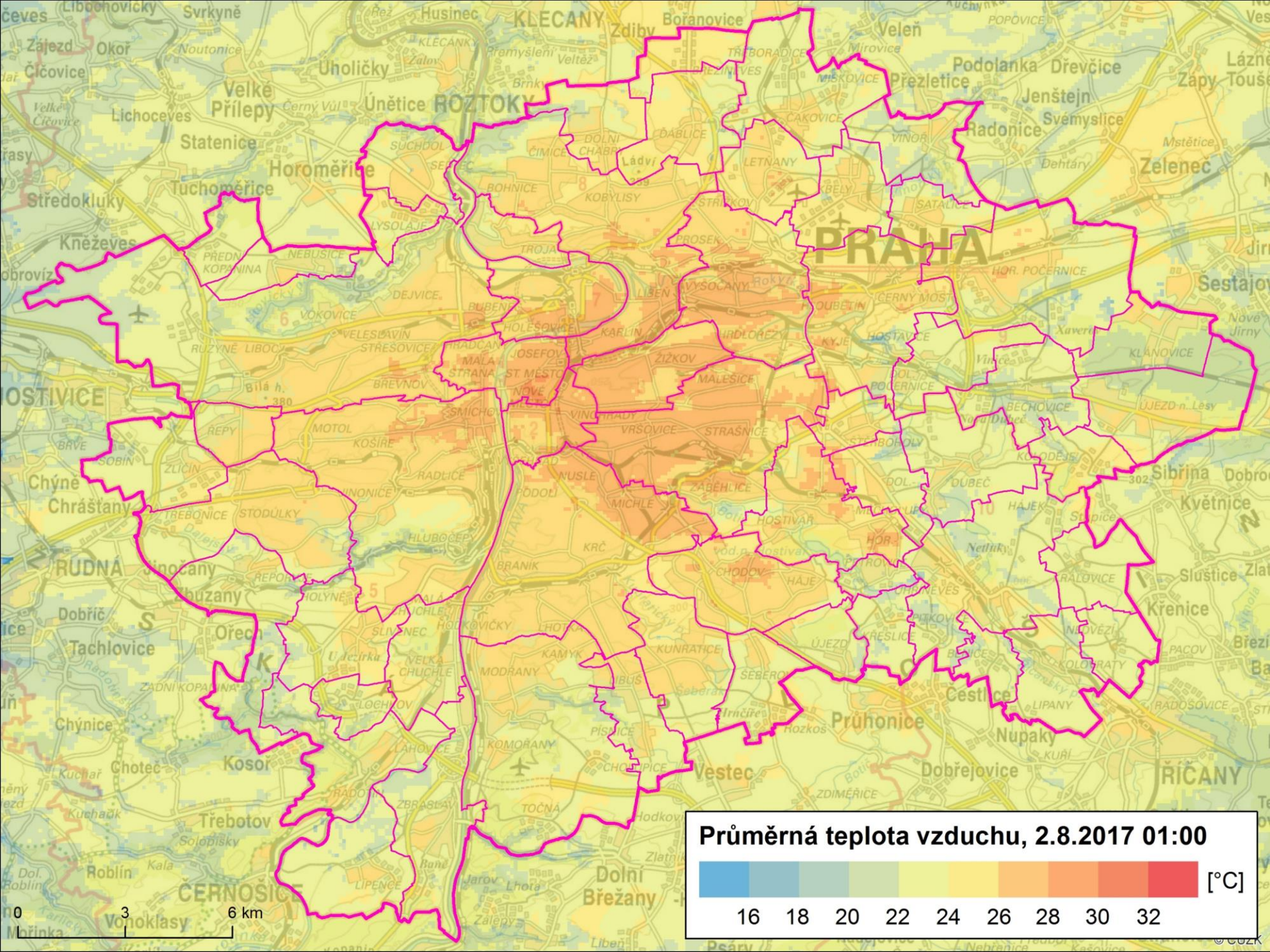
Průměrná teplota vzduchu, 1.8.2017 21:00

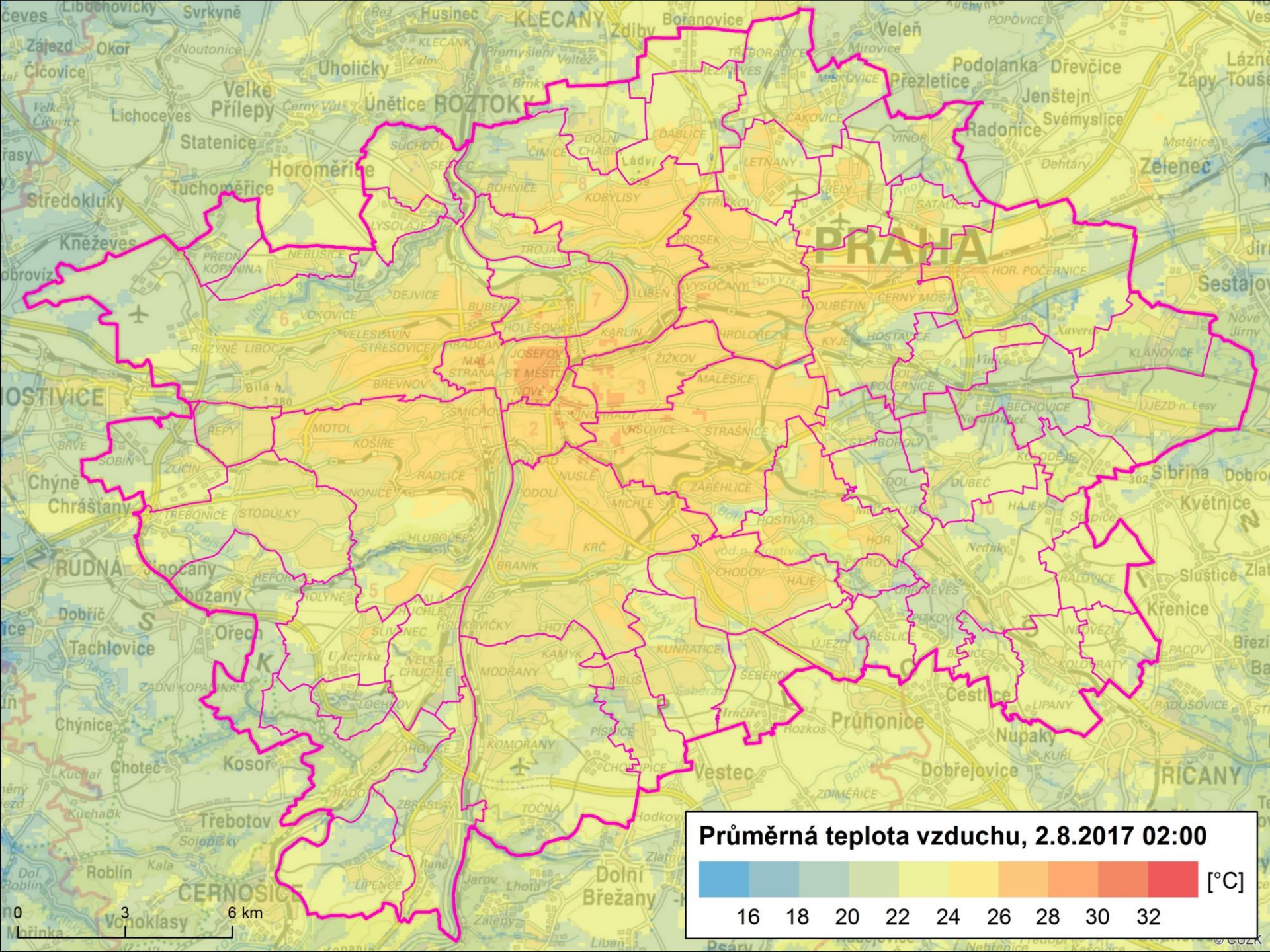
16 18 20 22 24 26 28 30 32 [°C]











DĚKUJI ZA POZORNOST...